

**Visual Art Standards:**

B.V.2.2 Understand the relationships between sensory awareness and artistic expression.

B.V.3.2 Use a variety of media, including 2-D, 3-D, and digital, to produce art.

---

**Vocabulary:**

Module:	single 3-d unit/element
Pattern:	motif(s) repeated more than twice in a predictable manner/rhythm
Form:	3-D object
Space:	area in, around, between, above, below objects
Cluster:	to group together in coherent, non-hierarchical way
Harmony:	combination of elements so that all parts work together
Additive:	add onto
Radial:	extending outward from a centrally located core

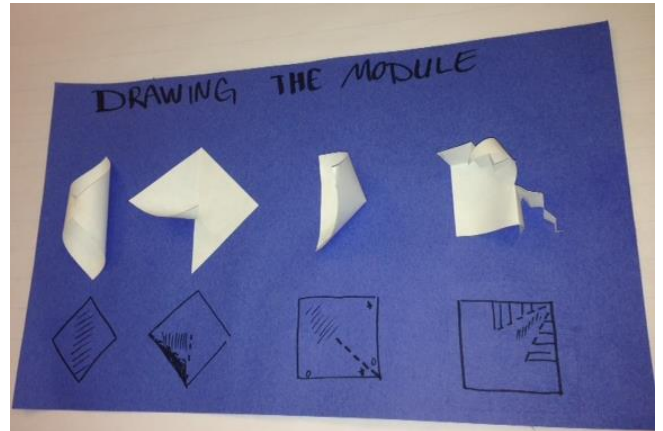
**Studio Activities:**

- 1- Illustrate understanding of grid, cluster & radial arrangements in planning
- 2- Illustrate understanding of module, relief and one arrangement style in mini project
- 3- Complete assignment in given time (2 class periods) – due on wall Wednesday at the end of class for a process grade.

**Materials:** white paper, scissors, Elmer’s glue, sketchbook

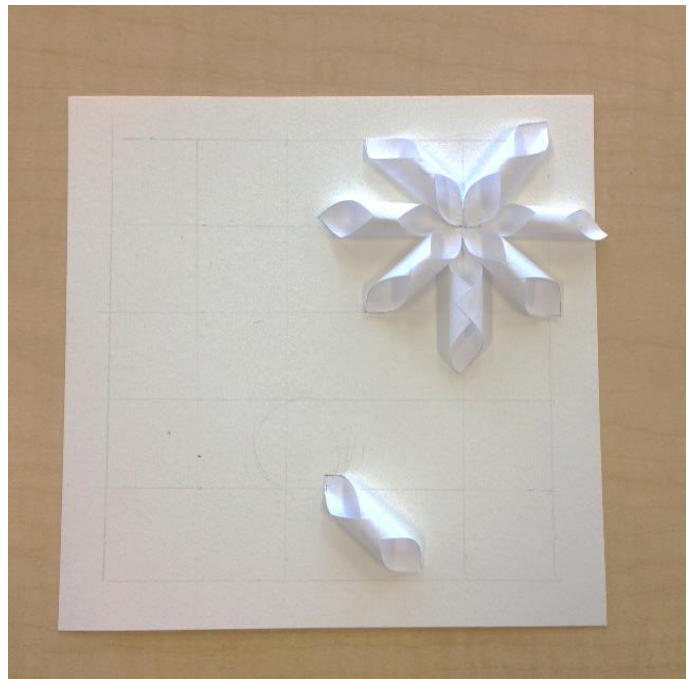
## DAY 1

1. Set up one page in your sketchbook for **Modular Paper Sculpture**.
2. **Define the vocabulary words:** Module, cluster and radial and illustrate grid, cluster and radial with a pattern
3. Get the paper squares worksheet and cut out 10 1" squares.
4. With 5 - bend, curl, cut (may not remove more than 10% of the square), & fold the 1" square until you achieve a 3-D form.
5. Choose the most interesting one then make 5 more just like it (you'll have 6 total).
6. SKETCH how the square became a form in your planning page. Refer to the "Drawing the Module" visual aid in class and show to the right. *Sketch dashed lines to show bends, solid lines to show cuts (shade in removed portions), and use a series of diagonals to show curves.*
7. Play with the 6 modules to create an idea of how you will arrange them into sculpture that is t least 3 modules deep in at least 1 area. **Sketch your idea** onto your planning page. (HINT: you should use a grid, cluster or radial arrangement)
8. Get a 6" square piece of white drawing paper from Ms. Cave.
9. Lightly draw a ½" border on the paper
10. Measure and draw a 5 x 5' grid LIGHTLY in pencil on the square paper.



## Day 2

1. Cut out and start making the other 40 modules
2. Carefully arrange and glue them to the white paper in your chosen manner (grid, cluster or radial)
3. Ensure that you make at least 3 modules deep in at least 1 area
4. Every now and then hold the paper vertical so that you can see the shadows created and make thoughtful choices about the arrangement of the work
5. USE AT LEAST 49 MODULES to create your paper sculpture
6. Store on the drying rack

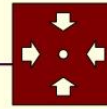


# ADDDITIVE FORMS



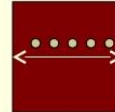
## CENTRALIZED FORMS

Consist of a number of secondary forms clustered about dominant , central parent form



## LINEAR FORMS

Consist of form arranged  
Sequentially in a row



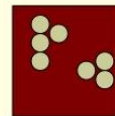
## RADIAL FORMS

Are composition of linear forms that extend outward from central forms in radial manner



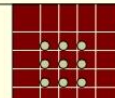
## CLUSTERED FORMS

Consist of forms that are grouped together by proximity or the sharing of a common visual trait



## GRID – FORMS

Are modular forms whose relationships are regulated by three dimensional grids



# CLUSTERED FORMS

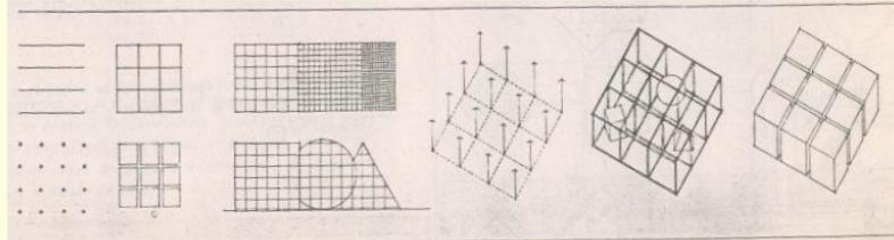


Habitat : montreal canada 1967  
Moshe Safdie



<http://www.frontdesk.co.in/forum/>

# GRID FORMS



A grid can be defined as two or more intersecting sets of **regularly spaced parallel lines** .

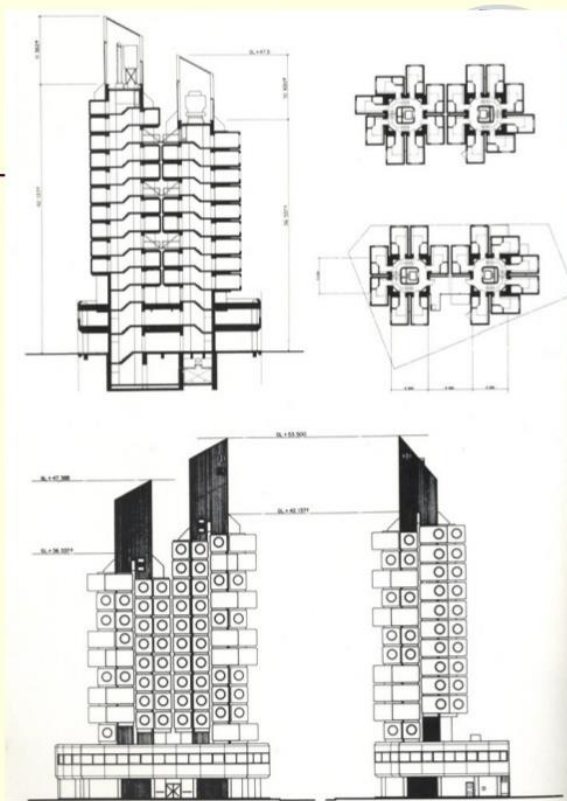
It generates a geometric pattern of **regularly spaced points** (where the grid lines intersect ) and **regular spaced fields** (define by grid lines)

Square grid : is Essentially -neutral , Non-hierarchical and Non- directional

# GRID FORMS



Nakagin capsule building : tokyo1972,  
Kisho kurokawa



<http://www.frontdesk.co.in/forum/>



# RADIAL FORMS

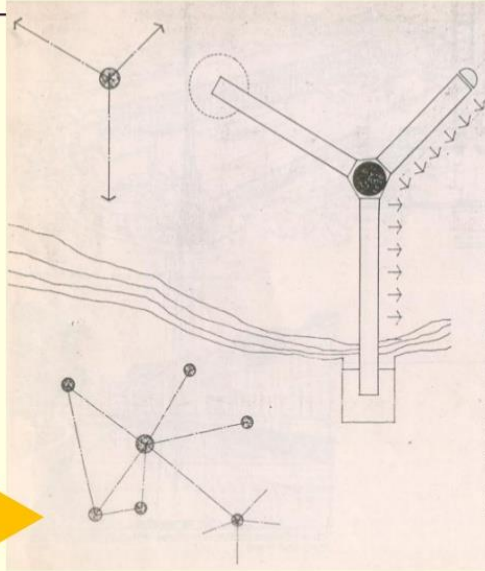


A Radial form consist of linear forms that extend outward from centrally located core element in a radiating manner

Composition = Centrality + linearity

Have extroverted nature

Can grow into network of several centers



<http://www.frontdesk.co.in/forum/>

# RADIAL FORMS



Jail



Paving Stone



<http://www.frontdesk.co.in/forum/>