

Art History

Set 1

You should know the work by sight, artist name, title & general period in history.

#1- Katsushika Hokusai



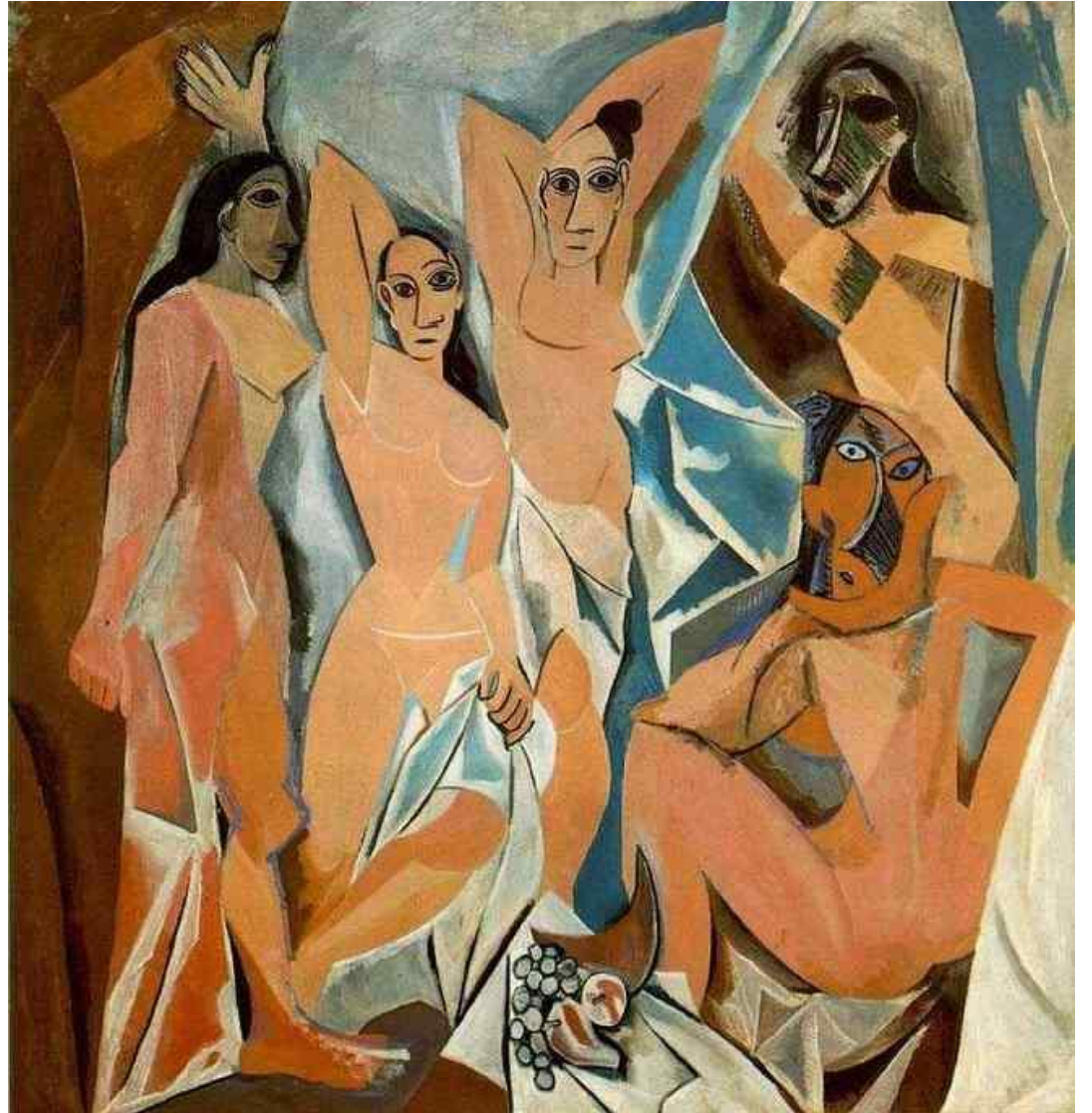
Repeated curved lines moves your eye through the art work like the flow of the water.

The Great Wave, ca. 1830–32, Japanese woodblock print
Learn more? [Click here](#)

#2- Pablo Picasso

Shape and **color** are repeated to create **movement** as your eye seeks out similarities.

Which museum displays this work? [Click here](#)



Demoiselles d'Avignon, 1907, Oil on Canvas, Cubism

#3- Frank Lloyd Wright



Fallingwater, 1936 designed for the family of Edgar J. Kaufmann.

Low values in the shaded deck overhang and beneath the waterfall contrast with **high values** of the rock face and vertical planes of the deck creating **emphasis**.

[Khan Academy even knows about him](#)

#4-Alexander Calder

When Calder chose to *repeat shapes* and **color** as well as use progression the sizes of the orange shapes he created **movement** . [See it move here.](#)

Untitled Mobile,
Alexander Calder
1976 Approx. 30' x 76'



#5- Paul Cezanne



Cezanne creates depth with aerial perspective as well as specific use of **color**. He believed that **warm colors** came forward and **cool colors** receded. You can learn more [here](#).

Still Life with Apples, 1895-98, (Museum of Modern Art, NYC, NY)